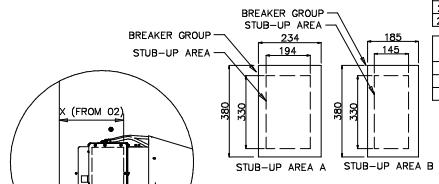


PICTORIAL VIEW



BREAKER STUB-UP LOCATION

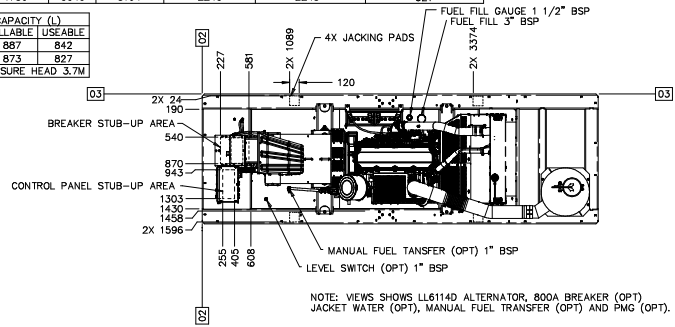
STUB-UP AREA A: FOR USE WITH
1250A/1600A NON-MOTORISED BREAKERS
1250A-2000A PTS GROUPS
630A-1600A MOTORISED BREAKERS

STUB-UP AREA B: FOR USE WITH
630A/800A NON-MOTORISED BREAKERS
630A/800A PTS GROUPS

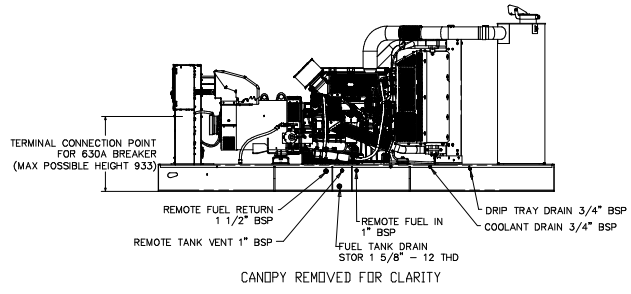
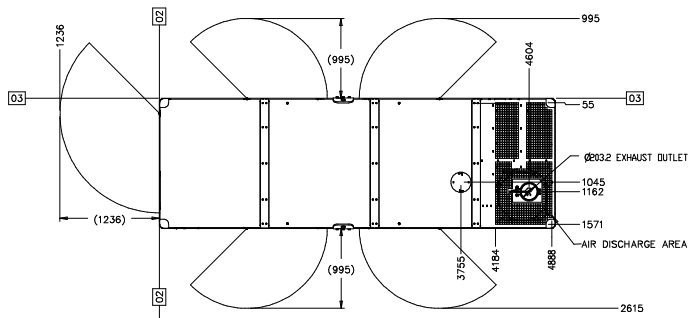
ENG / ALT OPTION	MASS (KG)		DUAL WALL MASS (KG)		CENTER OF GRAVITY FROM O2	DUAL WALL CENTER OF GRAVITY FROM O2	STUB UP AREA POSITION FROM O2 (X)
	WITH OIL	OIL & WATER	WITH OIL	OIL & WATER			
2206 / LL6114B	4597	4655	4921	4979	2271	2275	581
2206 / LL6114C	4609	4667	4933	4991	2269	2272	581
2206 / LL6114D	4722	4780	5046	5104	2240	2245	521

TANK BASE	TANK CAPACITY (L)	
	GROSS	FILLABLE / USEABLE
STANDARD	932	887 / 842
DUAL WALL	919	873 / 827

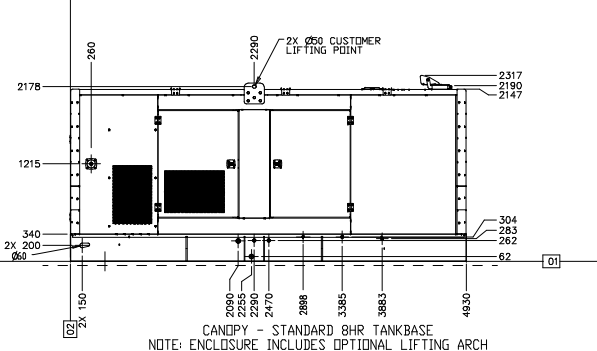
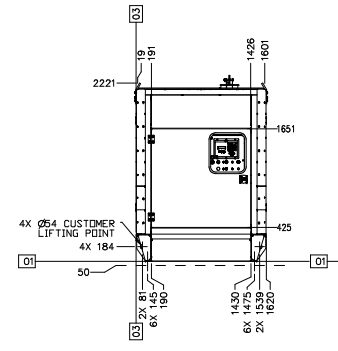
NOTE : DESIGN PRESSURE HEAD 3.7M



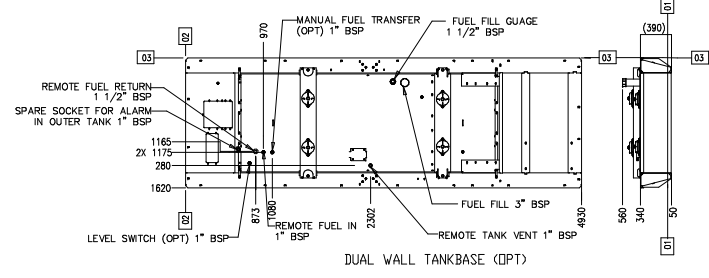
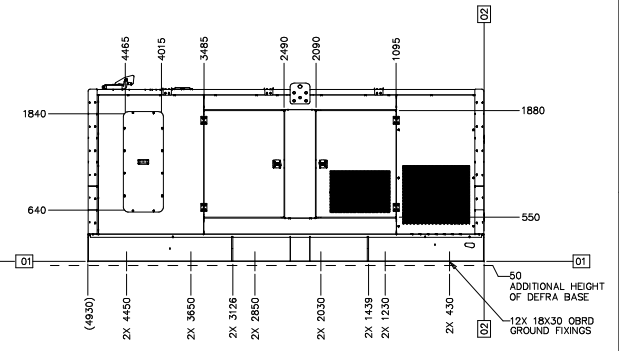
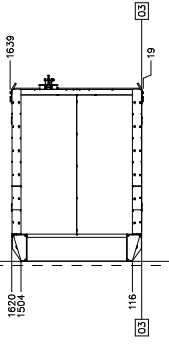
NOTE: VIEWS SHOWS LL6114D ALTERNATOR, 800A BREAKER (OPT)
JACKET WATER (OPT), MANUAL FUEL TRANSFER (OPT) AND PMG (OPT).



CANDPY REMOVED FOR CLARITY



CANDPY - STANDARD 8HR TANKBASE
NOTE: ENCLOSURE INCLUDES OPTIONAL LIFTING ARCH



DUAL WALL TANKBASE (OPT)

REV	DESCRIPTION	DATE	BY	CHKD
1	IE2722A DRAWING			
2	IE0035Y CONFIDENTIALITY			
3	IE0198R LETTERS			
4	IE0507B IDENT			
5	IE0011 INTRP & TOI			
6	IE0011 INTRP & TOI			

NO	DESCRIPTION	DATE	BY	CHKD
1	ISSUE OTHERWISE SPECIFIED			
2	PROVISION AND USE			
3	ISSUING V/S THE REV			
4	REVISION			

GENERAL AR-CDMPL
(2206 CAF/CAHA)

421-5221