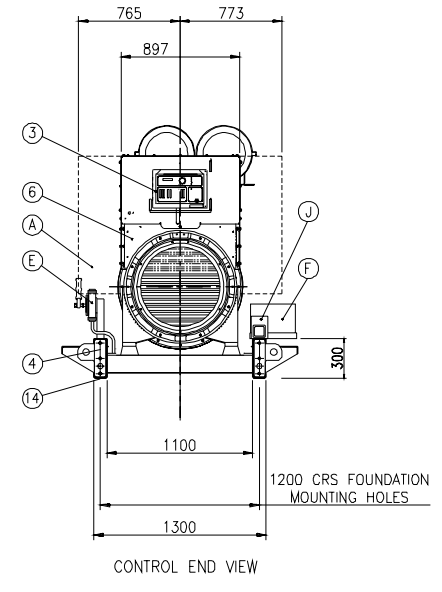
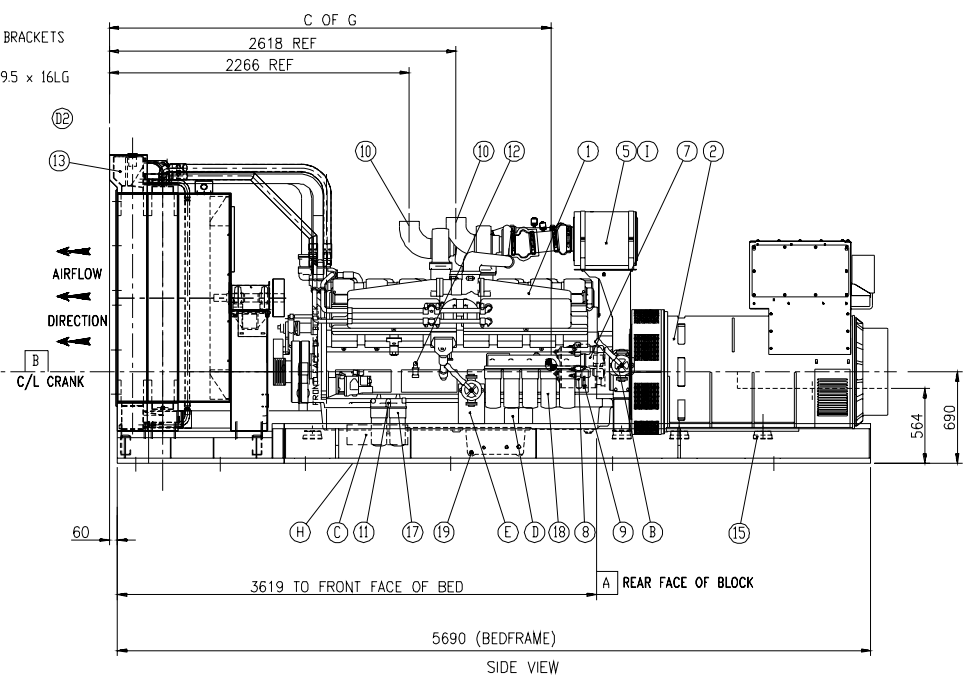
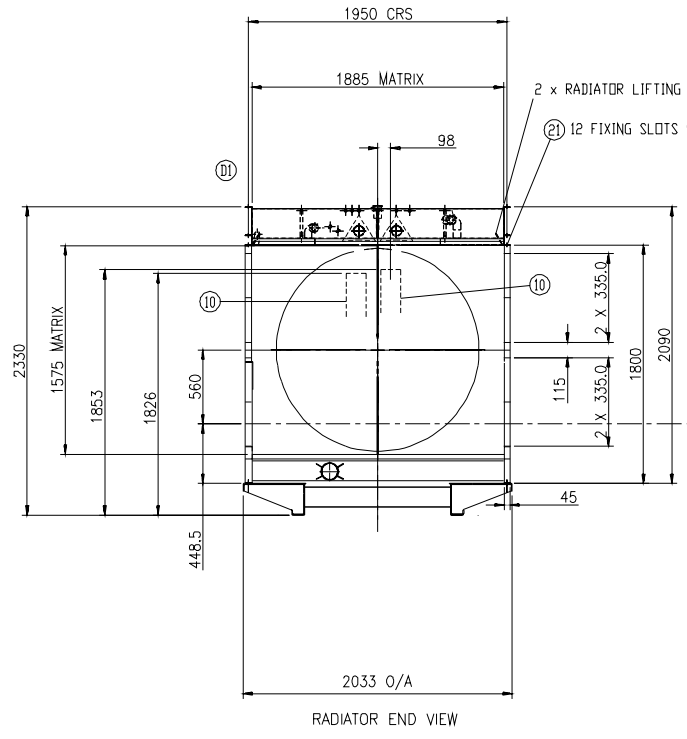
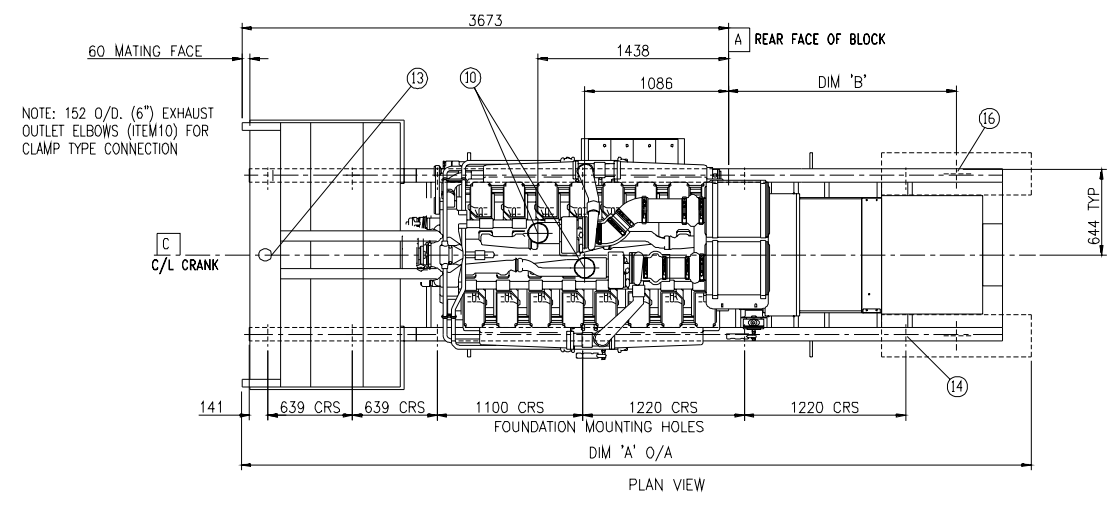


REV. No.	LTR No.	REV. No.	REVISION	ZONE	DRN	CHKD	APPROVED	DATE
ERK10135	A	1	PRODUCTION RELEASE		JM	AA	BARGENT	10/05/04
ERK10562	B	1	SEE SHEET 3		JM	AA	BARGENT	13/01/05
ERK12813	C	1	BASE TANK REMOVED AS STANDARD	15E	HL	CK	CONNOLLY	10/04/06
		2	BASE TANK REMOVED AS STANDARD	11E	HL	CK	CONNOLLY	10/04/06
		3	BASE TANK REMOVED AS STANDARD	8E	HL	CK	CONNOLLY	10/04/06
ERK12855	D	1	DRAWING UPDATED TO SHOW 40 DEG RAD	14F	NAD	CK	CONNOLLY	18/04/06
		2	DRAWING UPDATED PICTORIALY	11F	NAD	CK	CONNOLLY	18/04/06
ERK14103	E	1	RADIATOR DESCRIPTION WAS 40C/50C SHOWN	5C	RM	CK	CONNOLLY	12/02/07
ERK14151	F	1	FIRST USED ON DESCRIPTION WAS DFLC	--	RM	CK	CONNOLLY	21/02/07

**NOTES:**

- ENTRANCE OR CIRCUIT BREAKER BOX OPTION WILL BE MOUNTED ON THE LEFT SIDE VIEWED FROM THE CONTROL END UNLESS OTHERWISE STATED.
- CUSTOMER LOAD CABLES TO BE FLEXIBLE TO ALLOW FOR MOVEMENT OF GENSET ON A.V. MOUNTS.
- FOR OPTIONS NOT SHOWN SEE ASSOCIATED OPTION DETAILS.
- ALL WEIGHTS SHOWN ARE THE MAXIMUM WEIGHTS FOR EACH ENGINE/ALTERNATOR COMBINATION + ALL STANDARD OPTIONS.



ENGINE	ALTERNATOR	WT WITH DRY ENGINE Kg	WT WITH WET ENGINE Kg	DIM A	DIM B	C of G
KTA50C8/G9	P7B	9766	10068	5661	1487	2125
KTA50C8/Gs8/G9	P7C	10024	10326	5661	1487	2171
KTA50C8/Gs8/G9	P7D	10324	10626	5811	1627	2197
KTA50C8/Gs8/G9	P7E	10562	10864	5811	1627	2236
KTA50C8/Gs8/G9	P7F	10846	11148	5896	1722	2281
KTA50C9	P7G	11060	11362	5964	1722	2315

ITEM	DESCRIPTION
A	CIRCUIT BREAKER / ENTRANCE
B	FUEL TRANSFER HAND PUMP
C	ENGINE COOLANT HEATER
D	FUEL/WATER SEPARATOR
E	SUMP DRAIN PUMP
F	LEAD ACID BATTERIES
G	BASE FUEL TANK-2000 LITRES
H	FLOAT SWITCH
I	HEAVY DUTY AIR CLEANER (NOT SHOWN)
J	HEATER CONTROL BOX & SWITCH
K	PCCP3100 PARALLELING SET (SEE SHEET 2)

QTY	ITEM	PART No.	DESCRIPTION OR MATERIAL
12	21	-	RADIATOR DUCT FIXING HOLES
-	20	-	-
1	19	-	SUMP DRAIN
5	18	-	OIL FILTERS
2	17	-	FUEL FILTERS
1	16	-	LOAD CONNECTION GLAND PLATE
8	15	-	RESILIENT MOUNTINGS
10	14	-	FOUNDATION FIXING HOLES 22 DIA
1	13	-	RADIATOR 40C SHOWN ON SHEET 1/RADIATOR 50C SHOWN ON SHEET 2
1	12	-	SPILL RETURN FLEX TERM-3/4" BSP MALE
1	11	-	FUEL FEED FLEX TERM-1" BSP MALE
2	10	-	EXHAUST OUTLETS - 152 O/D )6"
1	9	-	OIL LEVEL DIPSTICK
1	8	-	LUB OIL FILTER
2	7	-	STARTER MOTOR - FAR SIDE
1	6	-	CONTROL HOUSING (P7 ONLY)
1	5	-	AIR CLEANERS
1	4	-	BEDFRAME
1	3	-	CONTROL PANEL PCC2100 (SINGLE SET ONLY)
1	2	-	ALTERNATOR-NEWAGE P7B/C/D/E/F/G
1	1	-	ENGINE - KTA50-G8/Gs8/G9

**Cummins Power Generation**  
 Columbus Avenue, Manston, Ramsgate  
 Kent, CT12 5BF, England, UK

GENSET OUTLINE

0500-4106

SHEET 1 OF 3

DATE: 10/05/04  
 DRAWN: J MATHEWS  
 CHECKED: A ANDREWS  
 APPROVED: M BARGENT

SCALE: 1:25

AutoCAD

DO NOT SCALE PRINT

ANGLE TOL: ±1.0°  
 SCALE: 1:25

TOLERANCE UNLESS OTHERWISE SPECIFIED:  
 0.00-4.99 = ±0.15/-0.08  
 5.00-9.99 = ±0.20/-0.10  
 10.00-17.99 = ±0.25/-0.13  
 18.00-24.99 = ±0.30/-0.15

THIS DOCUMENT IS THE PROPERTY OF CUMMINS POWER GEN. ITS USE IS LIMITED TO THE ORIGINAL INTENTION AND IS NOT TO BE REPRODUCED OR TRANSMITTED IN ANY FORM OR BY ANY MEANS, ELECTRONIC OR MECHANICAL, INCLUDING PHOTOCOPYING, RECORDING, OR BY ANY INFORMATION STORAGE AND RETRIEVAL SYSTEM, WITHOUT THE WRITTEN PERMISSION OF CUMMINS POWER GEN. LTD OR ITS REPRESENTATIVE.

FOR INTERPRETATION OF DIMENSIONS AND TOLERANCES, SEE BS 5094.

FIRST USED ON: C1675 D5

PKG