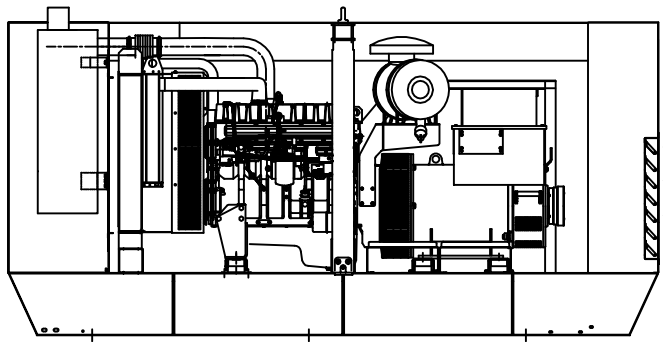


ITEM	QTY.	DESCRIPTION	DIM X	DIM Y	DIM Z
A	1	SOCKET - FUEL FILL	2156	290	420
B	1	1½" BSP HALF SOCKET - FUEL LEVEL GAUGE	1956	290	420
C	1	1" B.S.P. HALF SOCKET - LEVEL SWITCH	836	290	505
D	1	1" B.S.P. HALF SOCKET - REMOTE SUPPLY	801	290	900
E	1	1½" B.S.P. HALF SOCKET - REMOTE RETURN	801	290	990
F	1	1" B.S.P. HALF SOCKET - TANK DRAIN	761	45	211
G	1	½" B.S.P. SOCKET - ENGINE SUPPLY	2241	290	400
H	1	½" B.S.P. SOCKET - ENGINE RETURN	1831	290	425
I	1	1" BSP HALF SOCKET - FUEL VENT	1767	290	915
J	1	STUB-UP AREA - ONA (288x870)	558	375	650
K	1	CABLE EXIT - FGW/OLY (150x105)	738	375	1075.8

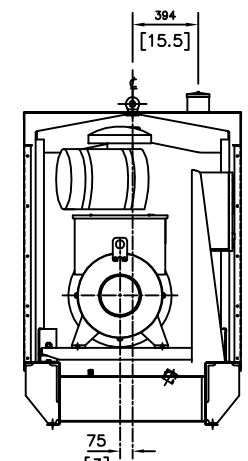
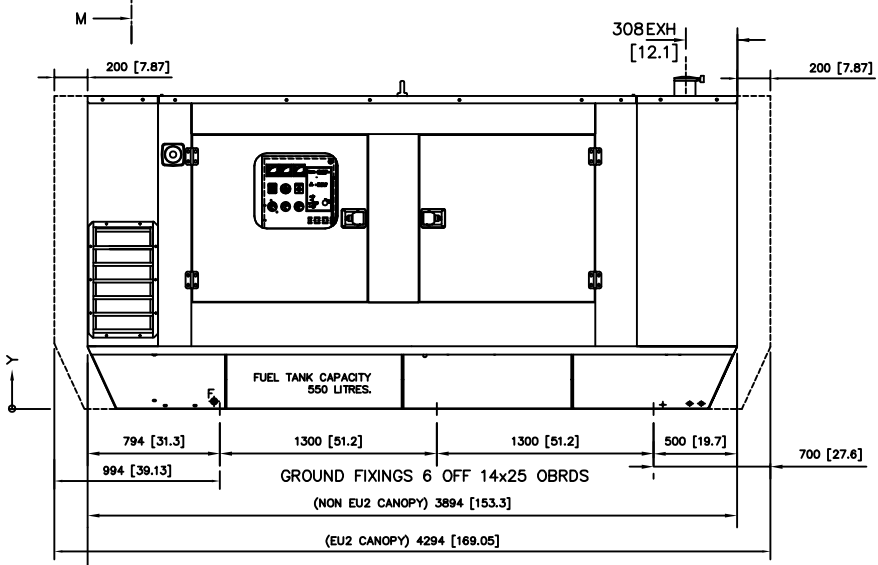
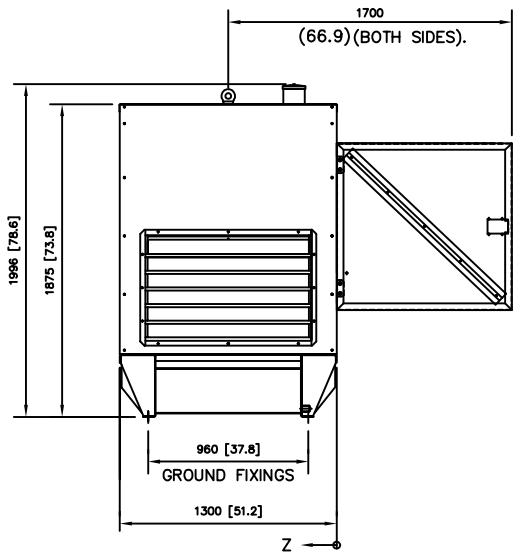
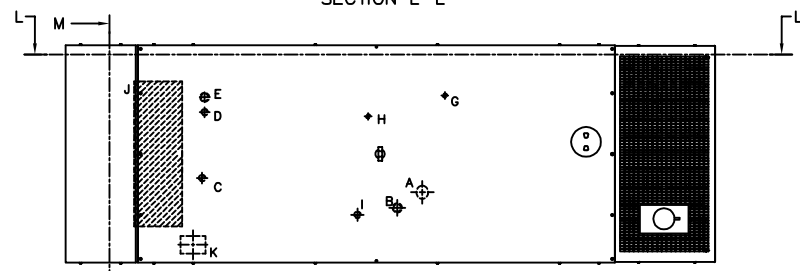
GENSET	WEIGHT (kg)		DIM X	DIM Y
	WITH OIL	WITH OIL & WATER		
1306ET215/LL3014H	2760	2797	1817	1080
1306ET215/LL5014H	2920	2957	1764	1073
1306ET215/LL5014J	2985	3022	1739	1070
1306C-E87TAG4/LL3014H	2835	2869	1828	1083
1306C-E87TAG4/LL5014F	2910	2944	1795	1080
1306C-E87TAG4/LL5014H	2995	3029	1776	1075
1306C-E87TAG4/LL5014J	3060	3094	1752	1072
1306C-E87TAG6/LL5014J	3110	3144	1760	1074
1306C-E87TAG6/LL5014L	3230	3264	1717	1069
* 1306C-E87TAG4/LL5014F	2857	2879	1795	1080
* 1306C-E87TAG4/LL5014H	2942	2964	1776	1075
* 1306C-E87TAG6/LL5014J	3007	3029	1760	1074

\* FITTED WITH NEW RADIATOR



AIR ON REAR & SIDES

SECTION L-L



SECTION M-M  
(ENGINE AND EXHAUST SYSTEM NOT SHOWN.)

ISSUE	DESCRIPTION	ECR/DCR	BY	DATE
G	UPDATED WEIGHT TABLE WITH DATA FOR NEW RADIATOR INTRODUCTION	34903	GL	20/07/11
F	1306 EU2 MODIFICATIONS ADDED	27384	M.P.	05/07/07
E	UPDATED FOR EC2008 OPTIONS	25259	RM	04/10/05
D	UPDATED PICTORALLY TO SHOW NEW CANOPY DOOR ARGMT	21202	PB	15/10/02
C	NEW RAD/ENG MOUNTING DETAIL & TITLE UPDATED	20810C	D.J.N	01/08/02
B	PARTS LIST UPDATED TO SHOW ENGINE/ALT COMBINATION DWG/ WEIGHTS (PUBLED)		PB	14/02/02
A	FIRST ISSUE	20719	AD	13/10/01

TOLERANCES EXCEPT WHERE OTHERWISE STATED
0 - 500mm ± 1mm
500 - 2000mm ± 2mm
OVER 2000mm ± 3mm
STRUCTURAL ± 3mm
ANGULAR ± 1°

THIS DRAWING IS COPYRIGHTED AND MAY BE COPIED ONLY FOR THE PURPOSES OF MAINTAINING THE PURCHASED EQUIPMENT BY THE PURCHASER



DRN. BY	A.DANIEL	TITLE	G.A. OF D SERIES S.A CANOPY GENSET WITH 1300 SERIES ENG & LL3000/5000 SERIES ALT		
DATE	13/10/01	APPD. BY	SHEET SIZE	ORIGINAL SCALE	DRAWING NO.
DATE		DATE	A1	1:16	MGA5864
					G