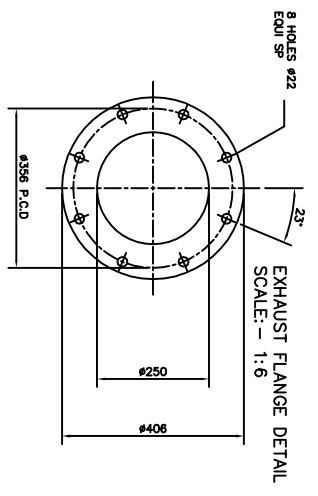


| ITEM QTY. | AUXILIARY CONNECTORS | DIM. X | DIM. Y | DIM. Z |
|-----------|--------------------------|--------|--------|--------|
| A 1 | FUEL SUPPLY 3/4" BSP | 1870 | 282 | 1715 |
| B 1 | FUEL RETURN 3/4" BSP | 2020 | 282 | 1715 |
| C 1 | OIL DRAIN OUTLET 1" BSP | 3020 | 100 | 1715 |
| D 1 | DHP TRAY OUTLET 3/4" BSP | 4095 | 60 | 585 |
| E 1 | DHP TRAY OUTLET 3/4" BSP | 4095 | 60 | 1715 |
| F 1 | RADIATOR DRAIN 3/4" BSP | 757 | 83 | 230 |
| G 1 | RADIATOR DRAIN 3/4" BSP | 757 | 83 | 2070 |

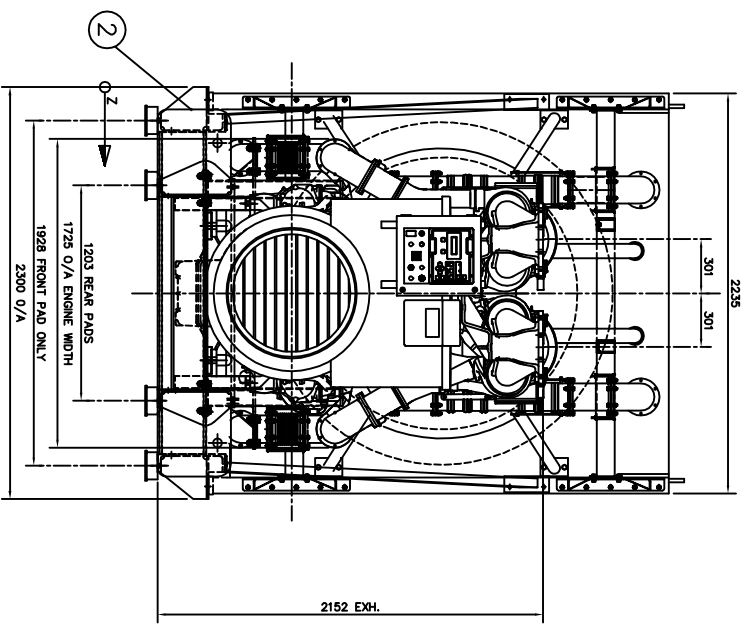
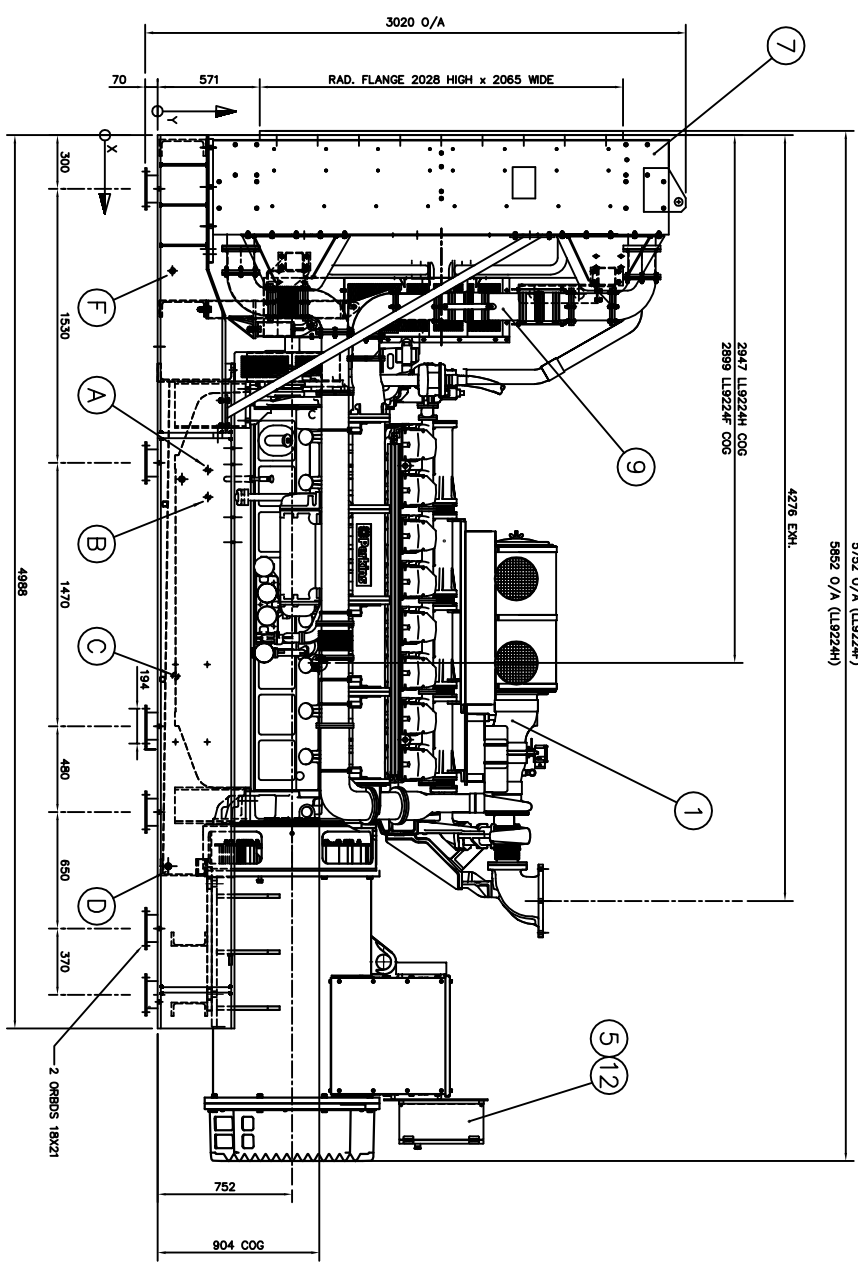
| | |
|-----------------------|--------------------|
| WEIGHT (KG) (L19224F) | |
| (WITH OIL) | (WITH OIL & WATER) |
| 15364 | 15680 |

| | |
|-----------------------|--------------------|
| WEIGHT (KG) (L19224H) | |
| (WITH OIL) | (WITH OIL & WATER) |
| 15139 | 15455 |



| ITEM QTY. | DESCRIPTION | DRG./PART NO. |
|-----------|-------------------------------|---------------|
| 1 | ENGINE/ALTERNATOR COMBINATION | 366-4300 |
| 2 | SKIDBASE GROUP | MCS4320 |
| 3 | FUEL LINE GROUP | MCS4340 |
| 4 | FUEL COOLER GROUP | MCS4240 |
| 5 | CONTROL PANEL (IF FITTED) | - |
| 6 | BATTERY GROUP | MCS4217 |
| 7 | RADIATOR PEDESTAL GROUP | MCS4226 |
| 8 | WATER CIRCUIT ASSY GROUP | MCS4232 |
| 9 | CHARGE AIR ASSY GROUP | MCS4330 |
| 10 | BREAKER (IF FITTED) | - |
| 11 | COUPLING GROUP | MCS4212 |
| 12 | PANEL UPRIGT GROUP | 384-7987 |
| 13 | SENDERS GROUP | MCS4312 |
| 14 | HAZARD LABELS GROUP | MCS4211 |
| 15 | FAN & PULLEY GUARD GROUP | MCS4238 |

* ITEMS NOT SHOWN



! SPREADER BARS MUST ALWAYS BE USED WHEN LIFTING GENSET !

| ISSUE | DESCRIPTION | BY | DATE | QA REVIEWED TO REFLECT CHANGES TO BASEFRAME AND ALTERNATOR | 3RD ANGLE PRODUCTION |
|-------|---|------|----------|--|----------------------|
| A | FIRST ISSUE | V.V. | 13/12/02 | | |
| B | E/2/- HOLES IN FRONT LIFTING LUGS MOVED FROM 2100 PITCH TO 1875 | V.V. | 13/12/02 | | |
| C | REPLACED PANEL WITH POWER WIRING PANEL AND REMOVED WIRING | R.F. | 28/06/07 | | |
| D | PART LOCATIONS FOR 3 AND 12 CONNECTED | S.P. | 18/06/10 | | |
| E | MODIFIED QA TO SHOW THE CHANGE OF BELLOWS | S.P. | 27/01/11 | | |
| F | FAN POSITIONS AND PANEL LOCATION CONNECTED | J.C. | 23/09/11 | | |
| G | ENGINE/LIFT GP & PANEL UPRIGT GP UPDATED, EIM REMOVED | J.C. | 14/11/12 | | |

TOLERANCES EXCEPT WHERE OTHERWISE STATED:
 0 - 25.0mm ± 0.25mm
 OVER 25.0mm ± 0.50mm
 DIMENSIONS IN MILLIMETERS UNLESS OTHERWISE STATED

THIS DRAWING IS CONSIDERED VALID AND MAY BE CORRECTED ONLY FOR THE PURPOSES OF MAINTAINING THE ACCURACY OF DIMENSIONS IN MILLIMETERS UNLESS OTHERWISE STATED

DRN. BY: V.YOUNG
 DATE: 08/03/02
 APPD. BY: [Signature]
 DATE: [Signature]

TITLE: G.A. OF A0871C/1A/2A ENGINE, LEROY L19224F/H ALTERNATOR AND CONTROL DR0464901 R10.
 SHEET: ORIGINAL
 SIZE: A1
 SCALE: 1:15
 DRAWING NO.: MGA5982
 ISSUE: H