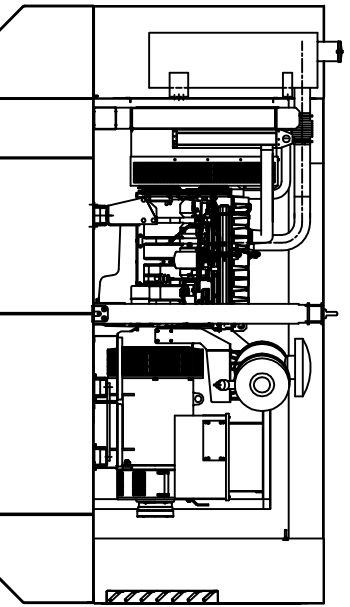
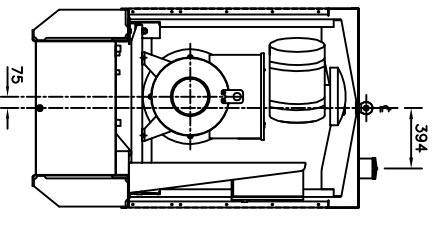
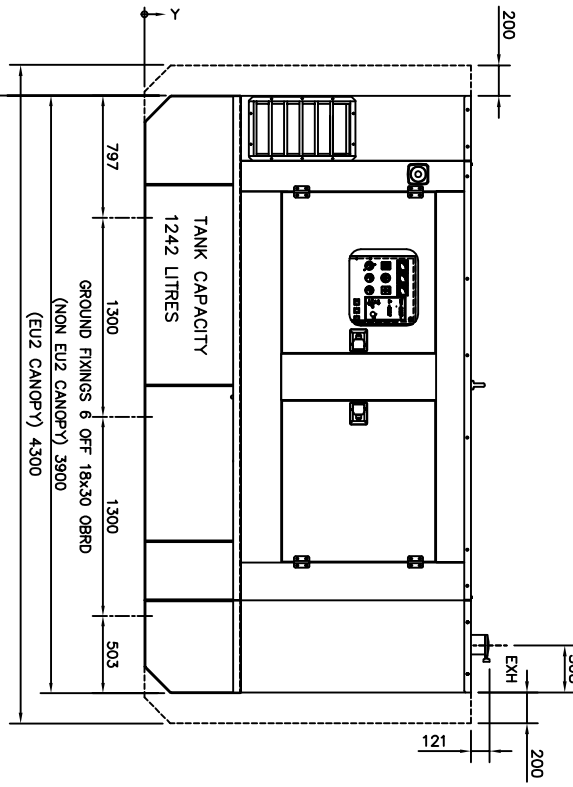
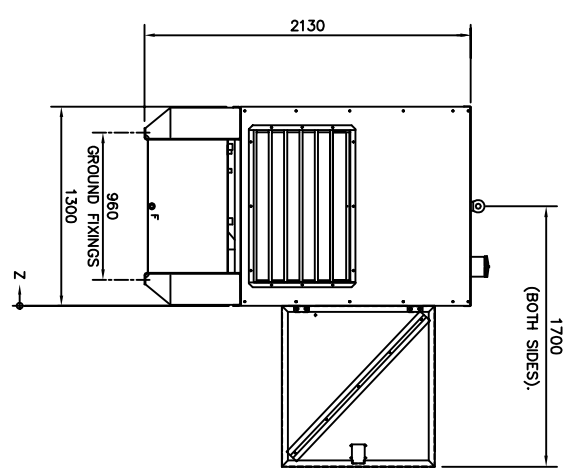
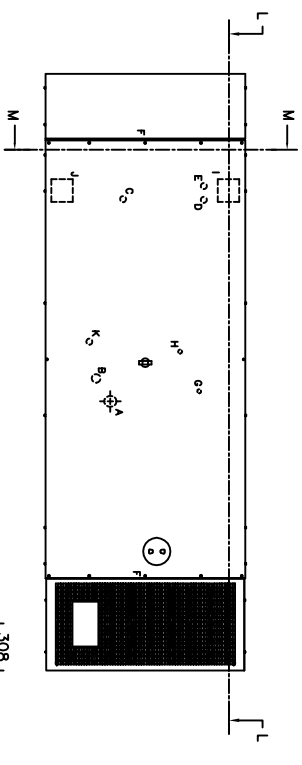


ITEM QTY.	DESCRIPTION	DIM.X	DIM.Y	DIM.Z
A 1	SOCKET - FUEL FILL	2145	545	420
B 1	FUEL LEVEL GAUGE	1997	545	327
C 1	1" BSP SOCKET LEVEL SWITCH	825	545	456
D 1	1" BSP SKT. REMOTE SUPPLY	830	545	1030
E 1	1" BSP SOCKET REMOTE DRAIN	740	545	1030
F 2	1" BSP SOCKET DRAIN	489	48	650
G 1	1/2" BSP SOCKET ENG. SUPPLY	2080	545	1000
H 1	1/2" BSP SOCKET ENG. RETURN	1820	545	875
I 1	CABLE EXIT 150X140 RECT.	784	630	1192.5
J 1	CABLE EXIT 150X140 RECT.	784	630	1077.5
K 1	1" BSP SKT. FUEL VENT	1736	545	281



SECTION L-L



SECTION M-M  
(ENGINE AND EXHAUST SYSTEM NOT SHOWN)

GENSET	WEIGHT (kg)		Code	
	WITH OIL	WITH OIL & WATER	DM X	DM Y
1306E1215/LL3014H	3160	3194	1870	1456
1306C-E87TA6/LL3014H	3305	3340	1890	1457
1306C-E87TA6/LL5014H	3160	3194	1852	1456
1306C-E87TA6/LL5014U	3305	3340	1835	1452
1306C-E87TA6/LL5014U	3305	3340	1838	1454
1306C-E87TA6/LL5014F	3107	3129	1852	1458
1306C-E87TA6/LL5014H	3192	3214	1835	1452
1306C-E87TA6/LL5014H	3192	3214	1835	1452

\* FITTED WITH NEW RADIATOR

ISSUE	DESCRIPTION	REV/NO	BY	DATE
A	FIRST ISSUE	20719	AD	13/10/01
B	PARTS LIST UPDATED TO SHOW ENGINE/ALT COMBINATION PWS/ WEIGHTS UPDATED	20314	P.B	14/02/02
C	NEW RAD/ENG MOUNTING & TITLE UPDATED	20910C	DM	15/09/02
D	UPDATED PICTORIALS TO SHOW NEW CANOPY DOOR ASSEMBLY	21202	P.B	15/10/02
E	UPDATED PICTORIALS TO SHOW NEW CANOPY DOOR ASSEMBLY	21202	P.B	15/10/02
F	1306 EU2 MODIFICATIONS ADDED	21204	M.P	05/07/07
G	UPDATED WEIGHT TABLE WITH DATA FOR NEW RADIATOR INTRODUCTION	37480	DL	03/09/11
H	UPDATED LLS014 TO LLS014H WITH NEW RADIATOR, CO2 & WEIGHT TABLE	37480	RP	03/09/11

<p>DO NOT SCALE</p> <p>THIS DRAWING IS COMPUTERIZED AND MAY BE CORRECTED OR MODIFIED WITHOUT NOTICE BY THE MANUFACTURER.</p> <p>ALL DIMENSIONS IN MILLIMETRES UNLESS OTHERWISE STATED.</p>		<p>TOLERANCES EXPERT WHERE OTHERWISE STATED</p> <p>0 - 50mm ± 0.1mm</p> <p>50 - 100mm ± 0.15mm</p> <p>100 - 200mm ± 0.2mm</p> <p>OVER 200mm ± 0.3mm</p> <p>ANGLES ± 30'</p> <p>FINISHES AS SHOWN</p>	
<p>DRN. BY</p> <p>ADANIEL</p>	<p>TITLE</p> <p>G.A. OF S.A. EXTENDED CAPACITY GENSET WITH 1300 SERIES ENG &amp; LL3000/5000 SERIES ALT</p>	<p>DATE</p> <p>13/10/01</p>	<p>APPR. BY</p> <p><i>S. Wilby</i></p>
<p>SHEET</p> <p>A1</p>	<p>ORIGINAL SCALE</p> <p>1:18</p>	<p>DRAWING NO.</p> <p>MCA5865</p>	<p>ISSUE</p> <p>G</p>