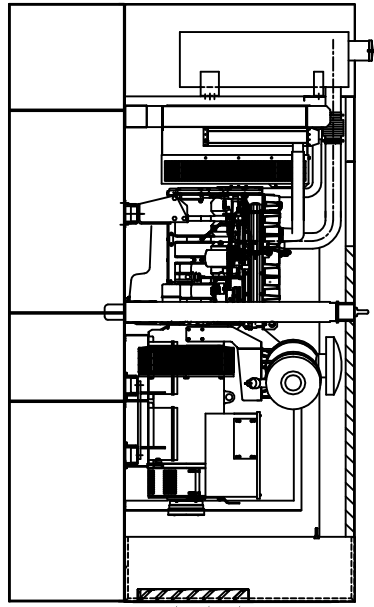
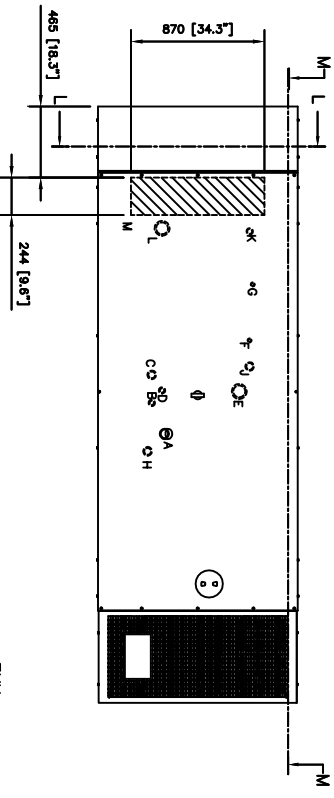
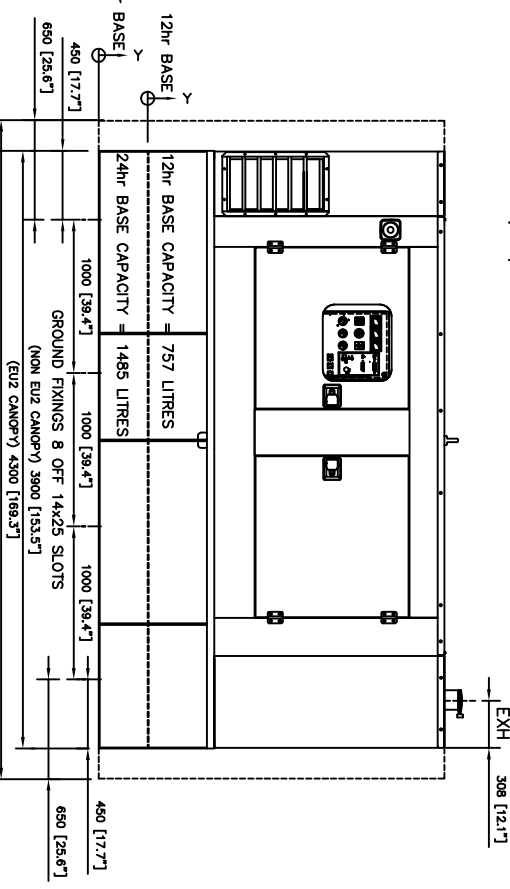
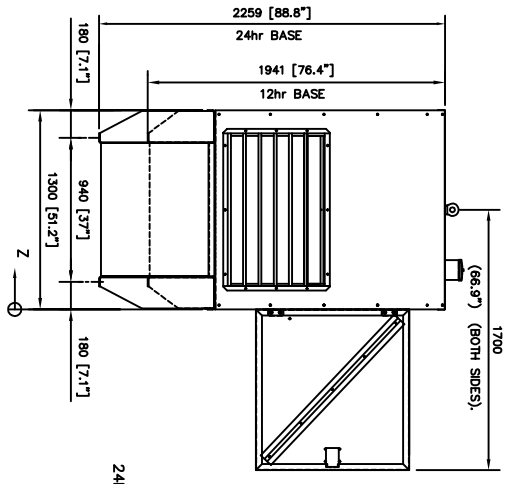


ITEM	DESCRIPTION	DIM X	DIM Y	DIM Z	DIM X	DIM Y	DIM Z
A	MANUAL FUEL FILL - 2" BSP SOCKET	2140	750	457	2140	435	457
B	FUEL LEVEL SWITCH - 1" BSP HALF SOCKET	1935	731	352	1935	416	352
C	FUEL LEVEL GAUGE - 1 1/2" BSP HALF SOCKET	1753	720	352	1753	405	352
D	REMOTE FUEL SUPPLY - 1" BSP HALF SOCKET	1833	704	395	1273	405	395
E	EMERGENCY RELIEF VENT - 4" BSP SOCKET	1860	766	923	1860	446	923
F	FUEL RETURN - 1/2" BSP SOCKET	1528	709	991	1528	410	991
G	FUEL SUPPLY - 1/2" BSP SOCKET	1163	709	1011	1163	410	1011
H	REMOTE FUEL RETURN - 1 1/2" BSP HALF SOCKET	2223	704	295	1273	405	295
J	FUEL TANK BREATHER - 1 1/2" BSP HALF SOCKET	1698	731	991	1698	416	991
K	LEAK DETECTION PROBE - 1" BSP HALF SOCKET	815	748	1011	815	417	1011
L	BUND TANK DRAIN - 4" BSP SOCKET	796	721	419	796	301	419
M	STUB-UP AREA (244 x 870)	590	756	650	590	441	650

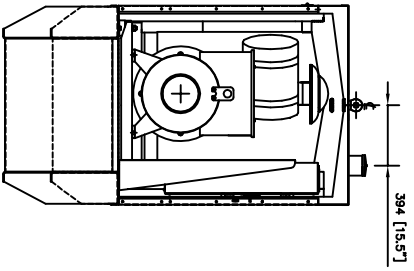


SECTION M-M

AIR ON REAR & SIDES

ENG/ALT COMBINATION	WITH OIL	WITH OIL & WATER	CENTRE OF GRAVITY
	WT (kg)	WT (kg)	DM X DM Y
1306C-E87TAG/LL3014H	3500	3537	1851 1451
1306C-E87TAG/LL3014F	3450	3487	1857 1452
1306C-E87TAG/LL5014H	3535	3572	1857 1450
1306C-E87TAG/LL5014J	3600	3637	1805 1448
1306C-E87TAG/LL5014L	3770	3807	1774 1446
1306C-E87TAG/LL5014F	3485	3487	1837 1452
1306C-E87TAG/LL5014H	3550	3572	1857 1450
1306C-E87TAG/LL5014H	2965	3002	1845 1090
1006TAG/LL3014F	2857	2801	1645 994
1006TAG/LL3014H	2612	2601	1645 994
1006-TA/LL3014H	2612	2656	1645 994
1006TAG/LL3014H	2612	2656	1645 994
1006TAG/LL5014F	2897	2731	1645 994

\* FITTED WITH NEW RADIATOR



SECTION L-L

ITEM	DESCRIPTION	REV/ISSUE	DATE	BY	DATE
1	ISSUE DESCRIPTION	1			
2	INTRODUCTION OF NEW U/DRAWING	2	02/08/04	ADANIEL	13/10/01
3	REFERENCE TO JOBELETS ENGINE DRAWING FROM DRAWING	3	09/02/02		
4	NEW RAD/ENG MOUNTING DETAIL & TITLE UPDATED	4	12/09/02		
5	FIRST ISSUE	5	20/01/00		

REV/ISSUE	DATE	BY	DESCRIPTION
1	02/08/04	ADANIEL	INTRODUCTION OF NEW U/DRAWING
2	09/02/02		REFERENCE TO JOBELETS ENGINE DRAWING FROM DRAWING
3	12/09/02		NEW RAD/ENG MOUNTING DETAIL & TITLE UPDATED
4	20/01/00		FIRST ISSUE

REV/ISSUE	DATE	BY	DESCRIPTION
1	02/08/04	ADANIEL	INTRODUCTION OF NEW U/DRAWING
2	09/02/02		REFERENCE TO JOBELETS ENGINE DRAWING FROM DRAWING
3	12/09/02		NEW RAD/ENG MOUNTING DETAIL & TITLE UPDATED
4	20/01/00		FIRST ISSUE